



Wisconsin Ice Age Trail and Milwaukee Trip Notes **October 3 to 13, 2018**

Observations on Milwaukee

- Explore? I really enjoy exploring new places and this was! New and interesting.
- Taxi versus Uber? I never saw a taxi or taxi stand and even the airport has an Uber pick up site. There will soon be a downtown free trolley. I saw it in test runs and it's one of the nicest around.
- Old versus new? Milwaukee is full of old glorious buildings and they need an architectural tour to fully appreciate them. I have mixed emotions about the old look of the city.
- Safe versus crime? Everywhere seemed clean and without street people but I'm told there are sections with high crime.
- Rich versus poor? The typical tourist will only see the huge mansions, clean downtown, new Lakeside stadiums, museums, etc. below you will read about the old "red lining" which is some of the most discriminatory in the country and maybe the reason for their crime.
- Young versus old? This being a major university city, the norm are young, healthy and slim looking people. I don't know how because there is such good eating available.
- Parts of the city were built on landfill and in places such as 100 year old Brady Street and even the City Hall needed to replace wood pilings with concrete. Some buildings can be seen leaning.
- Costs are said to be extremely low for housing and even as a tourist it felt a bargain. There are lists showing Milwaukee as an up and coming city. It is quite close to other major cities such as Chicago.
- Immigrants had a very important role in the building of Milwaukee. The German influence as well as Polish remain and both are now used as a tourist draws.

On my way to Milwaukee

First for four days tourist in a town I don't know and then for a seven day hike on Wisconsin's Ice Age Trail.

Tomorrow is our legal 48 years anniversary. 50 years together was in August. I'm supposed to say "it seems like only yesterday" but we've done a lot. Packed a lot into those 50 always-wonderful years. Happy Anniversary Honey.

Starting at Newark. I really feel lucky to be near a major airport. But don't be jealous: today was real third world. The domestic lounge has been changed to international first class only so we are relegated to a crappy pop-up lounge. Boarding was stairs and a walk to a bus and more steps to a little tube of an economy-only seat plane so more third world. At least the rain let up. But I can hear it now, no sympathy and as long as my plane doesn't land in Lake Michigan, I shouldn't complain.

Why does Milwaukee feature a Riverwalk instead of a lakefront walk? Well the answer is that they have both a Riverwalk and a Lakefront walk. Both are delightful looking. I walked some of the lakefront today and drove by the some of the riverfront.

I am at the Marriott in a near perfect location. Nice concierge's lounge and top floor room.

Main effort for the day: Milwaukee Art Museum - Milwaukee's waterfront got an upgrade in 2001 when a new, ultra-modern addition came to the Milwaukee Art Museum. The soaring white structure of the Quadracci Pavilion looks like the prow of a ship setting to sea, with its masts and sails flowing out behind it. I'm very fond of the famous designer Santiago Calatrava. Inside, the museum is equally impressive, a world-class art museum that got its start in the late 1800s, and today boasts 30,000 works of art ranging from antiquity all the way to the modern era—notable names include Monet, Picasso and Warhol. The exhibits are constantly rotating through 40 galleries across four stories. Visitors should especially make time to explore the museum's collection of works from Wisconsin native Georgia O'Keeffe, one of the largest in the world. If you want to learn more here are some links.

<https://mam.org/visit/>

https://en.m.wikipedia.org/wiki/Milwaukee_Art_Museum

<https://m.youtube.com/watch?v=1sIONyT3nkc>

The “wings” of the museum didn't open today because of high winds. How did Chicago ever get the term windy city? They didn't know about Milwaukee. Much of the day had winds that pretty much picked me off my feet.

Staying in the museum for a meal in one of their restaurants was a delight as I had a Lakeside view and the food was quite good. Besides my feet needed a rest.

But despite the winds, the temperature was mild, and I even walked about 10 blocks in one direction in order to get to an alcohol store.

Tomorrow I have a bus and walking overview of the town starting at 10 AM at City Hall.



Somehow I lost all my picture descriptions from my daily notes. These are my dramatic pictures from inside the Santiago Calatrava art museum and it was even on a cloudy day! The inside was like flying buttresses on both sides. Some famous art. Some of you made a guessing game.



Fragonard is one of my favorite artists, with the NYC Frick museum having some of the best, followed by Paris Luxembourg Gardens one time exhibit. Georgia O’Keeffe’s home is Wisconsin and thus her largest collection is here. Rothbard I don’t get.



I had to stop for a while and eat, and drink, drink in the water views from both sides of the room. Onto art sculpture on the streets of Milwaukee.



Inside the historical Pfizer Hotel, sunset out my hotel window, and food offerings at the hotel’s concierge lounge.

Milwaukee on Thursday – Part 2

Yesterday topped at 86° and today barely topped 50° and took all the clothes I could wear to keep warm. Does the wind ever let up?

Milwaukee seems pretty cool and I’m still trying to find out the bad side other than maybe it’s really cold - and windy - part of the year.

From the website- <https://onmilwaukee.com/market/articles/movetomilwaukee.html>

Greater Milwaukee has plenty to offer. Add it all up and it's almost overwhelming. Boil it down, though, into 18 reasons and it's nearly impossible to say no to at least considering a move to Brew City. End. Check out the above link which I don't disagree with.

My morning started with breakfast in the concierge lounge and then moved onto a bit of a walk to join an overview city tour. From Untapped Tours: A day with Untapped Tours is the best way to get up close and personal with Milwaukee. Our Milwaukee tours include a ride past the beautiful mansions along Lake Michigan, numerous photo opportunities at the city's most unique landmarks, as well as several stops where you can interact with locals and experience the city as they do. We'll take in City Hall, the Milwaukee Art Museum, North Point Lighthouse, Miller Park, the Historic Third Ward, and much more.

Our tours also include samples of cheese at the [Clock Shadow Creamery](#) and a brewery tour at [Lakefront Brewery](#) complete with a pint glass to take home with you! Enjoy all of this with an area native who knows the roads, the facts, and some of the worst jokes you will ever hear! End.

After a walk along the river walk (on both sides) and a picture of the bronze statue of Fronzie (whoever he is but there was a long line) I ventured into Germantown. Remember Milwaukee was primarily settled by German immigrants. After so much cheese sampling and a stout beer I wasn't sure I could eat but I couldn't resist the famous German restaurant. Nice atmosphere, wonderful service and reasonably good.

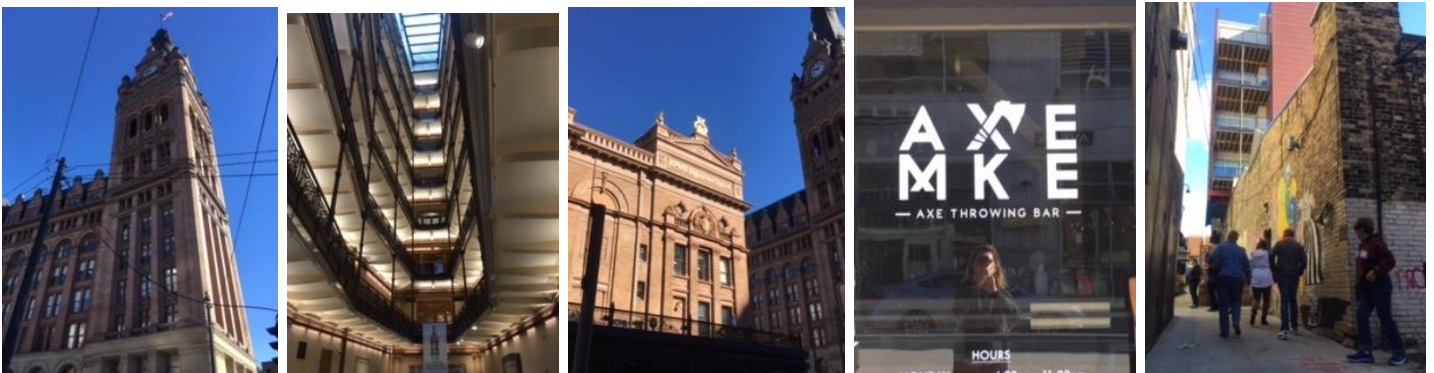
From Maders: <http://madersrestaurant.com/about/>

Mader's was founded in 1902; before the Wright brother's first flight and before Henry Ford's Model T. In 1902, A porterhouse steak or 1/2 roast duckling dinner, were priced at twenty cents, or six for \$1.00. Lunch was four cents, but if you drank two steins of beer at three cents for one stein, or a nickel for two steins, your lunch was free.

The tables and chairs were wooden and rickety, the walls and bar uneven. The ceiling was tin, a fan provided the air circulation. Often the rugged men who frequented Mader's became inebriated, and stumbled out. There were no automobiles, so there were no laws regarding "blood alcohol levels". Suburbs hadn't been invented yet so men lived near their work place and walked, or rode a horse to work.

The majority of Milwaukee's population in 1902 were German immigrants and their beverage of choice was beer. This was the era when "Bucket Boys" toting a board dangling a half dozen pails of frothy beer, made the rounds through office buildings. Their refreshing goods were passed around to all – the early beer capitals natural answer to today's coffee break. End.

Tomorrow is a food tour in a new area.

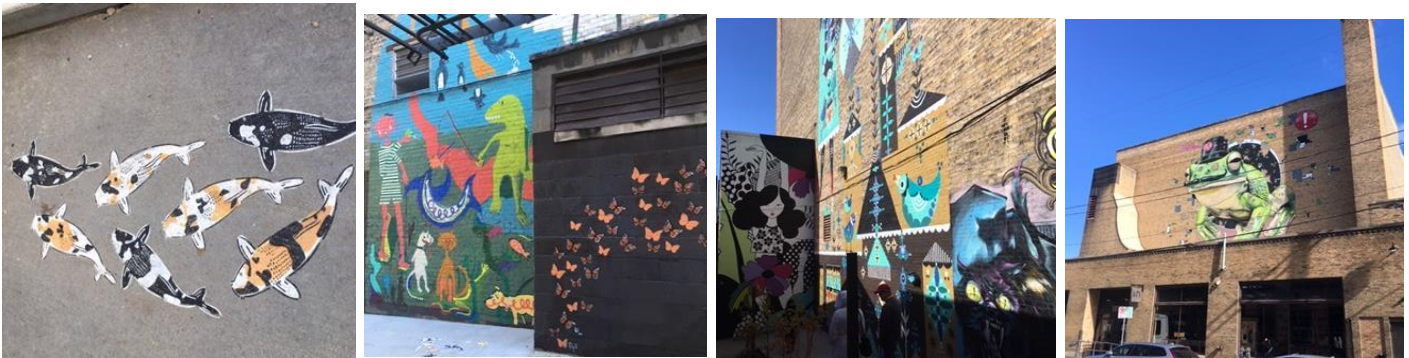


City Hall built over 100 years ago and recently renovated. It was built on wood pilings and started tilt which was recently repaired. It was once the tallest inhabited building in the world. It also had the distinction of the most suicides jumps.

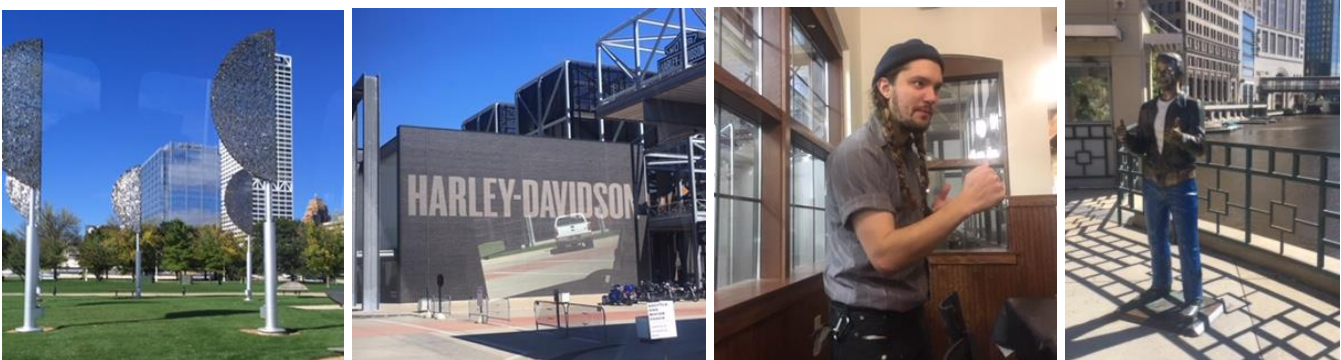
Across the street is the Pfizer Theater. Pfizer is only one of a number of famous beer establishments. They made Milwaukee rich.

I don't know this is what I would want to be known for but Milwaukee is the home to the first ax throwing bar. And my rare selfie.

Our bus participants were thrilled with this street full of wall graffiti. Having just come from Santiago Chile and before then Northern Ireland, I knew they hadn't seen anything. Yet I've never seen painted Koi on the ground and later saw more of the same art downtown.



The more north along the river, the nicer the parks and the bigger the mansions. Add a lakeside lighthouse we enjoyed seeing the overview and the carriage Trail. We laughed at the story of \$300,000 worth of damage to the bridges when a semi took a wrong turn onto the carriage trail. He said he was just following his Garmin. I can relate. I thought the license plate on the new car "our nani" was representative of the neighborhood.



They glitter, they move, and some of the seating serves as xylophones. Milwaukee has more than their fair share of parks. Home of Harley Davidson, their museum has one of every model from the beginning. Fortunately we went to a creamery and sampled many cheeses prior to our stop for a brewery tour. This character with the long braids drank beer along with us and was filled full of humor. I guess everybody knows who Fronzie is but me. I had to wait my turn to take the picture.



Along the Riverwalk and into Germantown and this well-known 100 year old restaurant. That is Weiner Schnitzel with Spätzle, sauerkraut and a side dish of red cabbage. First I had a chicken soup with potato dumplings. No I didn't miss having an Alsatian wine. I also didn't miss the comfort food in the concierge's lounge late evening. How about macaroni and cheese.

More food touring coming up tomorrow.

Milwaukee - Part 3

It was pouring rain and blowing when I got up but by the time I went for my walking and food tour it was light mist in the low 50s. This next week's hike will show whether I melt or not. Continued rain is predicted.

Brady Street Lunch Tour - <https://www.milwaukeefoodtours.com/> :

Inspired by Guiseppi and Rosa, who immigrated to Milwaukee from Santa Flavia, Sicily, 100 years ago, we combined our love for Milwaukee and great food to create Milwaukee Food & City Tours. Celebrating our 11th anniversary in 2018, we are Milwaukee's premier, original & award-winning tour company. Our tours provide the ideal combination of food, culture and history. Milwaukee Food & City Tours offers delicious tours exploring neighborhoods originally settled by Italian, Irish, Polish and German immigrants. On all of our food and cultural tours of Milwaukee, we point out architectural highlights, cultural hot spots, and great restaurants and shops while sampling flavors from restaurants along the way.

On our signature guided walking tour that started it all, we stroll through the fashionable East Side neighborhood of Brady Street – the ethnic district that was settled by Italian and Polish immigrants. Along the way, we'll enjoy delicious tastings at authentic Italian eateries, as well as at several newer establishments that revitalized this community.

Did you know that the famous book, Psycho, was penned on Brady Street? Or the reason why many Milwaukee homes are referred to as a "Polish Flat?" You will learn that and more on this tour! Included:

- A walking tour with 5-6 stops that will include pizza, cannoli, empanadas, salami, prosciutto, olives, cottage pie and a Milwaukee brewed beer. End.

1- Zaffiro's Pizza -many generations and now with additional locations.

2- Brady Street. Mostly built by the Polish. Was like Haight Ashbury, was a high crime and drug location, and now becoming a hotspot.

3- La Masa Empanada Bar.

I chose Argentine style though there were many to include vegetarian choices and desserts. In Santiago Chile recently we had a cooking class making empanadas.

4- Peter Sciortino Bakery - Sicilian pastries like cannoli's. Some also had coffee in order to warm their hands.

5- Glorioso's Deli, a specialty food center - selections of hams, salamis, cheeses and olives. Hunger had long since been abated but we all ate it all anyway.

It is such the busy street with huge numbers of restaurants and this odd one: Thai-namite!

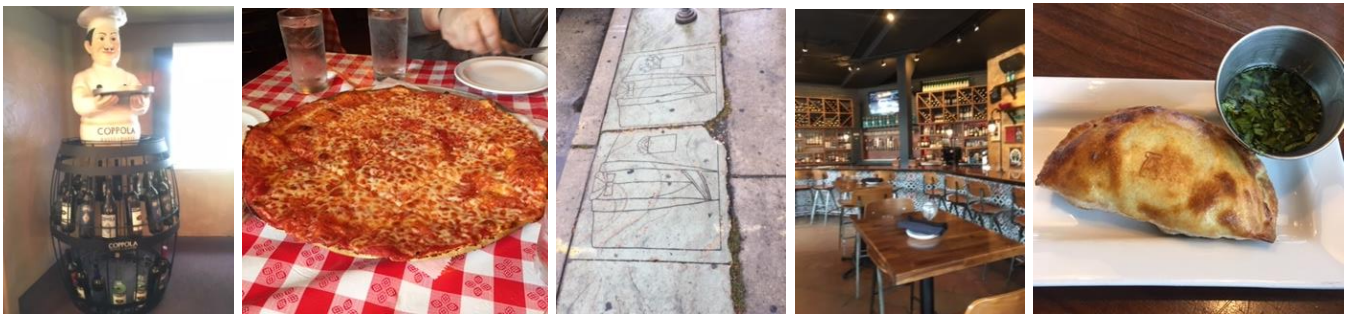
Walked through neighborhood to the river and Polish Flats. Picture a small cottage built by the Polish and then when they had enough money they would raise the cottage and add another level underneath. So Polish flats are symbolized by the stairway to the original level.

6-Red lion pub on tannery row gave us Shepherd's pie. I hadn't had shepherd's pie since August in Ireland. Smile.

7- Wolski Bar with Lakefront Brewery, Inc. From 1908 and in the same family. Part of it looked it. It is somewhat noted for the bumper stickers that say "I closed up Wolski bar."

Did I say my surprise of their having all these Riverwalk and lakefront walks? Well it's no wonder since they are known for their Junction of three rivers. Three! The last of our walking tour took us through the leather tanning area of where of course none remains.

All through Milwaukee we see old industrial factories converted to elegant condos. And so many of them can claim water views because of all the rivers and the huge lakefront.



The first stop on our food tour featured Coppola wines. Less than a week ago we were with our friends Nick and Angie Coppola who bottle their own wines and gifted us two bottles. Super thin crust like that in Naples Italy.

The sidewalks on Brady Street are covered with this artwork. It generally denotes the type of store that it fronted.

First stop was empanadas. We (Marie really) made them from scratch in Santiago.





A Polish flat as described above shows the original small cottage lifted upwards with a lower level added. The stairways thus are common. (Oops – lost the picture!)

Shepherd's pie at the riverfront pub

A long walk home covered the lake side street traversed on my bus tour yesterday but I wanted to walk it and see it better. The older homes were often owned by the beer barons. I don't know why these huge estates were all built side by side unless that was just what they were comfortable with from the old country.



And then there's the little home for the birds.

Another look at the Santiago Calatrava designed art museum from the military Museum Lakeside. The wings remain closed due to wind.

Milwaukee features art sculpture along their main roadways and they're just coming upon the time for auctioning.



I thought their blocks-long flower gardens were some of the best art.

Last stop of the day was again into the old historic Pfizer Hotel for a stop in their cocktail lounge. Tomorrow Nola will join me for a food tour of the upcoming popular 3rd ward which includes the German section.

Milwaukee on Saturday Oct 6

Nola and I walked Wisconsin Street to view the street art that is soon to be auctioned and we were rewarded with a view of the art museums wings spread open. Though we really didn't have time to

justify an art tour, we did take a walk in the public spaces. So we saw the more dramatic outside with the wings open and the inside that was unique for me too because a wedding was just being set up.

Nola had just finished guiding a five day Wisconsin Ice Age Trail hike. On Sunday she will lead some of us on a repeat but seven day Ice Age hike. On her day off, with the kindness of fellow guide Steve offering to do the shopping legwork, she is joined me in the city.

Old World 3rd Street Tour - From Milwaukeefoodtours.com

Milwaukee's spanning Riverwalk, located parallel to Water Street and the Milwaukee River in the vibrant Westtown neighborhood, includes the culture, history and foods of Old World 3rd Street. Those traditions are just the beginning on this tour where Milwaukee's old German traditions meet delicious new delights!

This tour offers authentic German food tastings as well as an opportunity to eat, drink and socialize your way into newer establishments in the area. Sample Milwaukee's oldest microbrewery, schlemiel and schlimazel your way across the Milwaukee River to pay homage to The Fonz; visit one of the last historic Turner society buildings still being used for its original purpose; dine on fantastic foods and more!

And unlike many of our other tours, this route highlights plenty of shopping opportunities - splurge along the way and buy local treasures at a local cheese store, sausage store, spice house and more! Included:

- A walking tour with stops for a wide range of cuisines at our favorite spots including a glass of Wisconsin-brewed beer.

1-Water Street Brewery

Raspberry Weiss

Spinach salad with warm bacon

2- Uber Tap House and Cheese Bar

Lager

Salami, cheeses, pretzel bread

3-USingers famous sausages

4-The spice house

Learn, smell and taste

5-Mader's - again

Sauerbraten sandwich

6-Rumpus Room - ex Eagans on the Water

First James Beard award in area.

Root Beer Float

Weather? There was zero chance of rain predicted but it lightly rained on us.

What is Red-lining? Apparently city officials created zones which caused the most serious discrimination in the country. I don't know if that is true but it came from the Tour Guide. It is said to be a problem that continues to date. I found a series of articles on the web that seem to confirm: Red Lining - <http://www.wuwm.com/post/how-did-metro-milwaukee-become-so-segregated#stream/0>

After we were fully stuffed with about double the amount of food we should have consumed, we walked along the river to the big public market with guess what? More food. We bought cheese curds for our hikers to try. We continued on into the third ward which is an up-and-coming and pricier area that used to be factories and now is one shop and restaurant after another. Feet tired, or at least mine

were, we took an Uber to the airport where it was late enough and I was stuffed enough that I locked myself in the room until Sunday morning hike starts.



I have taken numerous pictures of this and walked by it multiple times but never saw the women figures. Do you? Nola did. But she is the artist.

Ah ha! Finally the winds died down enough that the wings of the Santiago Calatrava art museum came up. I LOVE IT! They operate in the morning and then at noon time and then at dusk. We walked inside but the only picture here is the center area that looks somewhat different with the wings up.

After an Uber ride we arrived at the beginning of our walking and food tour. We were next to a beer festival where of course we wandered through. We had extra time because virtually all of us arrived at the wrong door of the restaurant meeting point. After I called to headquarters I was told that we should stand still and the guide came around us.

He was a showman and perfect for a guide. He clearly enjoyed his food.



There was not only a beer festival at our meeting point but we were in the central courtyard up the huge Schultz beer factory complex. As you know it moved and then later closed down. There were plenty of beer companies left in Milwaukee anyway.

I sure have a huge collection of bar pictures. . . .

This stop was noted for its 50,000 cans of beer on the wall, zillions of beer openers, and all sorts of memorabilia. I will remember it for the warm spinach salad with egg, chicken, potatoes and olives.





Now onto the public market and however did we think we could enjoy more food but it was eye-candy. Before walking the streets of the famous third ward which were old factories converted to condos and ritzy retail shops.

Some of you know that my sister Beverly collects pictures of manhole covers. If you want to see my iCloud photo sharing drive, there are zillions of them. I add this one because it is a beauty. Look down sometimes and you will be surprised at what you're walking across.

Then sometimes and especially in this city you are rewarded with sidewalk street art. Check out the paint cans.

Next up? Hiking starting early tomorrow, Sunday, morning.

Pictures from Nola the Artist and Guide:



Port Washington Sunrise; Devil's Lake State Park Viewpoint; Autumn Colors in Wisconsin

The Hike - Wisconsin's Ice Age Trail

Don't be jealous. The weather is from one extreme to the other and so far most of the hike is a bit monotonous (to include the fending off of mosquitoes which just wouldn't quit). We've sweated and soon we will be bundling up in all we own with temps predicted as low as 27°.

Pictures? Very few in part because of rain but also because I had a heckuva time keeping up with these hikers who are not only much faster than me but also mostly look at their feet and count the miles.

Autumn Colors are spectacular and probably at their best. They go on and on; coming from little New Jersey I am continually amazed at the open spaces and huge expanse of land interspersed with picturesque red barns and silver silos.

Overview by www.ParksPlusHiking.com - In 1958, the Ice Age Park & Trail Foundation (now called the Ice Age Trail Alliance) was founded to create a 1000-mile trail along the southern boundary of Ice Age glaciation across Wisconsin. The resulting Ice Age National Scenic Trail (or "IAT" for short) is a stunning work in progress and the subject of one of our newest tours. On this unique 7-day tour, we will view the results of the last ice age in the context of the beautiful backwoods and other terrain of the upper Midwest.

From <http://www.iceagetrail.org/> *About the Ice Age Trail - More than 12,000 years ago, an immense flow of glacial ice sculpted a landscape of remarkable beauty across Wisconsin. As the glacier retreated, it left behind a variety of unique landscape features. These glacial remnants are now considered among the world's finest examples of how continental glaciation sculpts our planet.*

The Ice Age National Scenic Trail is a thousand-mile footpath that highlights these landscape features as it travels through some of the state's most beautiful natural areas. The Trail is entirely within Wisconsin and is one of only eleven National Scenic Trails. But the Ice Age Trail is more than a path through the woods. It is a place for mental and physical rejuvenation, a place to unwind after a hard day and enjoy the landscape of Wisconsin. More than 1 million people use the Ice Age Trail each year to hike and snowshoe, to backpack, to disconnect and reconnect.

Behind the scenes, a vibrant community of volunteers across the state work to build and maintain the Trail, making it one of the country's best hiking experiences.

Ice Age Trail Facts:

The Trail is managed by a partnership among the National Park Service, the Wisconsin Department of Natural Resources and the Ice Age Trail Alliance.

The Ice Age Trail is open for hiking, backpacking and snowshoeing. Many segments support cross-country skiing, too.

The Trail is not yet complete. More than 600 miles are yellow-blazed Ice Age Trail segments, and more than 500 miles of unmarked connecting routes link the blazed segments. The entire route is about 1,200 miles long.

The Trail's western terminus is in Interstate State Park in St. Croix Falls, Polk County. It overlooks the St. Croix River and our neighbors in Minnesota.

The Trail's eastern terminus is in Potawatomi State Park in Sturgeon Bay, Door County.

The Ice Age Trail is built and maintained largely by volunteers.

Most of the blazed Ice Age Trail Segments fit hikers' ideas of a traditional, off-road hiking experience. Some segments, however, lead hikers right down the main streets of Wisconsin communities. This is by design – the Ice Age Trail is meant to connect people and communities.

The Ice Age Trail began in the 1950s as the dream of Milwaukeean Ray Zillmer, who had a vision of a long, linear park winding through Wisconsin along the glacier's terminal moraine.

The Trail crosses over many ownership types, including private land, city parks, state parks, county forests and national forest.

The Trail travels through 31 counties.

Sun - Day 1 of hike

Scuppernong Segment - Distance: 6 mi - Difficulty: 2

Hotel Holiday Inn Harborview in Port Washington for 2 nights was probably the nicest Holiday Inn I've experienced and it was at the water and in a sweet little town with cute gift shops and restaurants.

From PPH: Our exploration of the IAT begins in the Southern Unit of Wisconsin's Kettle Moraine State Forest on a series of rolling hills through mostly wooded terrain passing many trailside kettles. The segment winds among a network of ski trails, passes a public backpack shelter and group campground, and crosses a short section of private land. Following this warm-up hike, we head to Port Washington and our hotel on the shore of Lake Michigan.

Glacier Glossary: Kettle--A surface depression formed when large, detached, buried blocks of glacial ice melt, causing sand and gravel covering the ice to collapse into a crater-like hole.

Mon - Day 2 of hike

Parnell Segment - Distance: 13 mi - Difficulty: 4

Our day's destination is the Northern Unit of the Kettle Moraine State Forest. Here we'll hike along a belt of forests, lakes, and wetlands surrounded on all sides by rolling farm fields. Highlights of the day include a traverse of world-famous Parnell Esker, which is four miles long and 5 - 30' in height, and the opportunity to climb 100' Parnell Observation Tower with its commanding view.

Glacier Glossary: Esker--A winding, rounded ridge composed of sand and gravel deposited by streams flowing through tunnels at the base of a glacier.

Tue - Day 3 of hike

Milwaukee River Segment - Distance: 8 mi - Difficulty: 3

Hotel AmericInn Lodge in Merrill for 2 nights

Today's hike continues through the northern Kettle Moraine, an area formed during the last Ice Age when two glacial lobes sideswiped each other then retreated leaving a rugged landscape of ridges, valleys, kettles, eskers, and kames. Following several wooded miles, the segment exits the State Forest and continues through farms fields, across several boardwalks, ending at the Sunburst Ski Hill. From the ski area, we'll commute northward to the small town of Merrill, our home for the next two evenings.

Glacier Glossary: Kame--A coned-shaped hill composed of water-rounded sand and cobblestones deposited by streams flowing downward through shafts in glacial ice.

Wed - Day 4 of hike

I took the day off because I couldn't see sloshing through the mud with heavy rain expected. At dinner I'll probably learn that it was the best day of all and I won't even care. I needed the rest as I was paying the price for having taken off the month of September to lounge around Alsace France with little to no exercise but lots of food and alcohol.

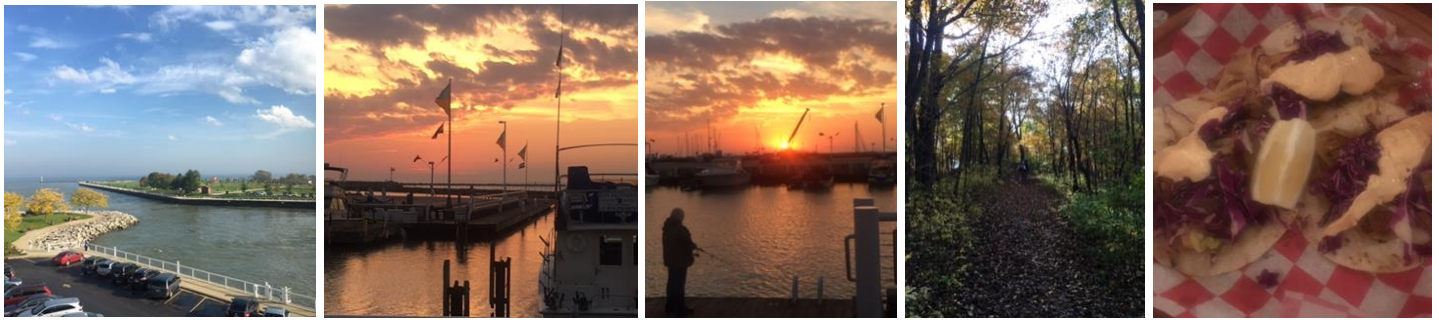
Tomorrow we move to the Wisconsin Dells so I can't take another day off. But the van follows along and I can certainly revert to the van on portions or all of the hike. Smile.



Fish tacos! Not that they are like any fish tacos I ever saw before but they were good.

Fogged in. Across the street from our hotel in Port Washington Lakeside.

Lovely autumn colors throughout. Interestingly it looked very much like my local park which is high on the eastern seaboard with the same type trees and trails.



The fog lifted, the sun came out, and we finally got a view of the lake to include the fish jumping. Early morning it was hard to get our hikers into the breakfast café for their interest in the fisherman and the fish jumping. All I could think of was our Koi at home. If our fish jump they have parasites and they are trying to dislodge the buggies. Yes. More fish tacos two nights in a row.

Tomorrow we move to the Wisconsin Dells.

To Tom - Update

OMG but its 26° low and 37° high. Plus wet. I have my little teeny black Patagonia jacket. Period. I'm taking two BUFFS, gloves, and three shirts under the Patagonia jacket and if I'm really cold I put rain gear on - need it or not. (Later – Nola took sympathy and loaned me a jacket for the rest of the week.



Stormy out my hotel window. I wasn't meant to lose any weight on this trip. Lots of Mexican foods.

Last of the hike

Thu Oct 11 - Day 5 of hike

Turtle Rock/Grandfather Falls Segments - Distance: 10 mi - Difficulty: 5

Hotel Cliffside Resort & Suites - 2 nights - www.cliffsideresort.com

The hotel looks better on the website then actual. The location was lovely, the maintenance was not.

Two hikes are planned for this day. West of the Wisconsin River and Grandfather Dam, we will hike a portion of the Turtle Rock Segment from a quiet logging road trailhead to the river's edge at the dam. Time permitting, we'll venture a bit further on an optional and very rocky/challenging trail to Grandfather Falls. Directly across the river, our second hike takes us above the fast-flowing river downstream of the dam with a short out-and-back spur into the Merrill School Forest. Following our hike, we'll head to our hotel in the Wisconsin Dells, this time overlooking scenic Lake Delton.

Glacier Glossary: Pothole--A smooth bowl carved into bedrock by the grinding action of stones whirling in a river eddy, often formed by torrents of glacial meltwater.

Fri Oct 12 - Day 6 of hike

Devil's Lake Segment - Distance: 11 mi - Difficulty: 5

Our sixth day on the IAT begins with a short commute from the Dells to our trailhead in Devil's Lake State Park. Highlights of the Devil's Lake segment include great views of the lake itself with its unique location between the 1.6 billion year-old east and west walls of Devil's Lake Gorge and two prominent glacial moraines "plugging" the lake to the north and south.

Glacier Glossary: Moraine--A ridge of widely varied length composed of sand, gravel, rocks, and boulders carried and deposited at the outer edge/front of the glacier.

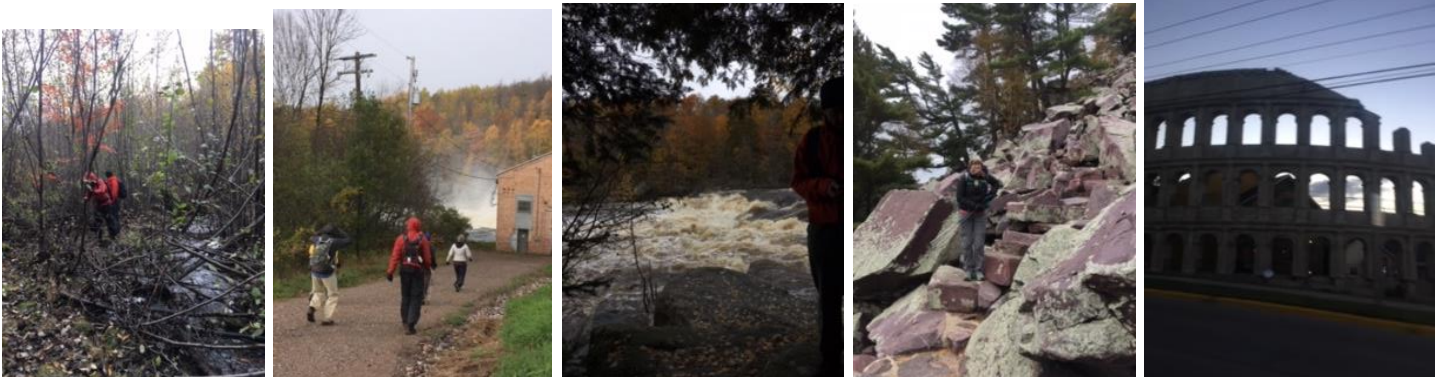
Sat Oct 13 - Day 7 of hike

Gibraltar Rock Segment - Distance: 6 mi - Difficulty: 3

Our final day's hike begins on the southern shore of Lake Wisconsin, which we'll reach via the Merrimac Ferry. From the Wayside Park trailhead, we'll make our way up a 200' hill to stunning views of the Wisconsin River and nearby Baraboo Hills. After looping back to the Wayside, we'll make a short van commute, then conclude our IAT experience with a climb to Gibraltar Rock, a flat sandstone butte above a bucolic valley. Following our hike, we'll have a final lunch together, then head back to Milwaukee.



Glacier Glossary: Ice Sheet--A very large glacier such as has covered North America more than a dozen times from 2.5 million to 10,000 years ago. Much of the terminus (or southernmost extent) of the last North American Ice Sheet formed a weaving line across Wisconsin about a thousand miles long.



There had been so much rain that a lot of land looked like a swamp. This hike wasn't to be due to flooding and no way to get around. Here at a dam we found overspray and rapids that had long gone over the banks. The next day was lovely around Devil's Lake and up a zillion stone steps built by the CCC, culminating in a super view.

We asked for and got a driving tour of Wisconsin Dells. Tacky Tacky! Hotel Rome with a coliseum out front. A Trojan horse for a roller coaster. Duck boats. Neon lights. Something like old time and old town Vegas.



Dinner is salmon whenever I can, and tacos all the time.



It was hard to get a picture of the tall cliffs. Here is a picture of a picture. Breakfast gave us a giant aquarium with local fish. The real Last Supper (lunch) gifted me with fish tacos once again.

Recombobulation Area! Nice little airport with a sense of humor.

Ending about 4pm; my evening flight was super tight since the airlines moved it up to 5:05pm vs my 7:15pm booking. Yet I was traveling very light without checked baggage, we got there a bit early, and all was well other than my being nervous about my short 2 day turn around, depart to Seattle/Everett on Wednesday Oct 17 for Skate America. Most things we worry about never come to pass and this was no exception.

End of THIS adventure with hopefully many more coming up – that are less nervous making.

Itinerary

Wed Oct 3

8:40am Depart Newark EWR via UA#4992

10:12am Arrive Milwaukee

Hotel Milwaukee Marriott Downtown – 3 nights

323 East Wisconsin Avenue, Milwaukee, Wisconsin 53202 Tele 414 278 5999

Thu, Fri and Sat Oct 4, 5 and 6

Take section of AAA book

To do:

Safe House, bar, restaurant, fun

Harley Davidson Museum

Historic Pfister Hotel

Lakefront Brewery, polka band

Pabst Brewery in old church and Pabst Mansion

Art Museum by Santiago Calatrava

Boat cruise – 90 minutes if running

Public Market, buy cheese curds

Take a Tour | Milwaukee's Historic Third Ward - <http://www.historicthirdward.org/about/takeatour.php>

The Third Ward is hands down one of the fastest growing areas in the city.

The Historic Third Ward is Milwaukee's most desirable downtown neighborhood to live, work, and entertain in. With Lake Michigan as your backyard, walkable distances to dozens of restaurants, galleries, and locally owned boutiques, it is no surprise that over 3,000 Milwaukeeans call this great neighborhood home.

The neighborhood is one of the fastest growing areas in the city. The energy and charm of the Historic Third Ward draws in folks from all walks of life. The neighborhood has a variety of residential offerings; from renovated warehouse lofts, to new apartment complexes, to historic spaces that reach into the enchanting past with a all the amenities of a modern home.

<https://eu.usatoday.com/story/travel/experience/food-and-wine/2018/06/06/milwaukee-beer-breweries/616526002/>

Why Milwaukee Is the Midwest's Coolest (and Most Underrated) City -

<https://www.vogue.com/article/travel-guide-milwaukee-wisconsin-midwest-coolest-city>

Tallisson / Frank Lloyd Wright house is 2 ½ hours away

Thu Oct 4

10:00am Milwaukee Sightseeing City Tour – 3 hours with live guide starting at City Hall

The 3 hour tour begins in front of Milwaukee's beautiful City Hall, the tallest habitable building in the world when it was completed! Next up is a short walk to see the Pabst Theater and a photo opportunity with the "Bronze Fonz." From here you will hop in the bus and begin the driving portion of the tour. You will see the Milwaukee Museum Mile and the East Side. You will also view the beautiful mansions that line the cliff above Lake Michigan.

The first stop on the tour is a chance to enjoy Lake Park and the North Point Lighthouse. You continue on with a drive along Lake Michigan and a 10-minute stop at the Milwaukee Art Museum. From here you travel through the Third Ward and Walker's Point neighborhoods and stop for cheese samples at the Clock Shadow Creamery.

The final stop is a 30-minute private tour and tasting at Lakefront Brewery. Each guest will leave the brewery with a souvenir pint glass or key-chain with a bottle opener on it. After the brewery you return to City Hall and conclude the tour.

Fri Oct 5

10:00am Hop On/Hop Off Bus tour of 1 hour – starting at Hilton on 5th

Friday or Saturday to 3pm last pick up.

11:30am Brady Street Lunch Tour – 3 hours – paid and ticket in file

<https://www.milwaukeefoodtours.com/> :

Inspired by Guiseppi and Rosa, who immigrated to Milwaukee from Santa Flavia, Sicily, 100 years ago, we combined our love for Milwaukee and great food to create Milwaukee Food & City Tours. Celebrating our 11th anniversary in 2018, we are Milwaukee's premier, original & award-winning tour company. Our tours provide the ideal combination of food, culture and history. Milwaukee Food & City Tours offers delicious tours exploring neighborhoods originally settled by Italian, Irish, Polish and German immigrants. On all of our food and cultural tours of Milwaukee, we point out architectural highlights, cultural hot spots, and great restaurants and shops while sampling flavors from restaurants along the way.

On our signature guided walking tour that started it all, we stroll through the fashionable East Side neighborhood of Brady Street – the ethnic district that was settled by Italian and Polish immigrants. Along the way, we'll enjoy delicious tastings at authentic Italian eateries, as well as at several newer establishments that revitalized this community.

Did you know that the famous book, Psycho, was penned on Brady Street? Or the reason why many Milwaukee homes are referred to as a "Polish Flat?" You will learn that and more on this tour!

Included in the per person price, attendees will enjoy:

- A walking tour with 5-6 stops that will include pizza, cannoli, empanadas, salami, prosciutto, olives, cottage pie and a Milwaukee brewed beer.

- Narrated and guided tour fun

Sat Oct 6

10:00am Hop On/Hop Off Bus tour of 1 hour – starting at Hilton on 5th Friday or Saturday to 3pm last pick up.

12:30pm Old World 3rd Street Tour 2 ½ hours – paid and ticket in file

Milwaukee's spanning RiverWalk, located parallel to Water Street and the Milwaukee River in the vibrant Westown neighborhood, includes the culture, history and foods of Old World 3rd Street. Those traditions are just the beginning on this tour where Milwaukee's old German traditions meet delicious new delights!

This tour offers authentic German food tastings as well as an opportunity to eat, drink and socialize your way into newer establishments in the area. Sample Milwaukee's oldest microbrewery, schlemiel and schlimazel your way across the Milwaukee River to pay homage to The Fonz; visit one of the last historic Turner society buildings still being used for its original purpose; dine on fantastic foods and more!

And unlike many of our other tours, this route highlights plenty of shopping opportunities - splurge along the way and buy local treasures at a local cheese store, sausage store, spice house and more!

Included in the per person price, attendees will enjoy:

- A walking tour with 4-5 stops for a wide range of cuisines at our favorite spots including one, 5-ounce sample of genuine Wisconsin-brewed beer.

- Narrated and guided tour fun!

Move to host hotel

Hotel Hampton Inn - Milwaukee Airport – 1 night
1200 West College Avenue, Milwaukee, WI 53221 Tele: 414 762 4240
Reserved by PPH and confirmed. \$119 night plus taxes – use Hilton AX card
Conf#816 68818

Sun Oct 7 – Day 1 of hike

Overview by www.ParksPlusHiking.com - In 1958, the Ice Age Park & Trail Foundation (now called the Ice Age Trail Alliance) was founded to create a 1000-mile trail along the southern boundary of Ice Age glaciation across Wisconsin. The resulting Ice Age National Scenic Trail (or "IAT" for short) is a stunning work in progress and the subject of one of our newest tours. On this unique 7-day tour, we will view the results of the last ice age in the context of the beautiful backwoods and other terrain of the upper Midwest.



From <http://www.iceagetrail.org/>

About the Ice Age Trail - More than 12,000 years ago, an immense flow of glacial ice sculpted a landscape of remarkable beauty across Wisconsin. As the glacier retreated, it left behind a variety of unique landscape features. These glacial remnants are now considered among the world's finest examples of how continental glaciation sculpts our planet.

The Ice Age National Scenic Trail is a thousand-mile footpath that highlights these landscape features as it travels through some of the state's most beautiful natural areas. The Trail is entirely within Wisconsin and is one of only eleven National Scenic Trails. But the Ice Age Trail is more than a path through the woods. It is a place for mental and physical rejuvenation, a place to unwind after a hard day and enjoy the landscape of Wisconsin. More than 1 million people use the Ice Age Trail each year to hike and snowshoe, to backpack, to disconnect and reconnect.

Behind the scenes, a vibrant community of volunteers across the state work to build and maintain the Trail, making it one of the country's best hiking experiences.

Ice Age Trail Facts:

The Trail is managed by a partnership among the National Park Service, the Wisconsin Department of Natural Resources and the Ice Age Trail Alliance.

The Ice Age Trail is open for hiking, backpacking and snowshoeing. Many segments support cross-country skiing, too. The Trail is not yet complete. More than 600 miles are yellow-blazed Ice Age Trail segments, and more than 500 miles of unmarked connecting routes link the blazed segments. The entire route is about 1,200 miles long.

The Trail's western terminus is in Interstate State Park in St. Croix Falls, Polk County. It overlooks the St. Croix River and our neighbors in Minnesota.

The Trail's eastern terminus is in Potawatomi State Park in Sturgeon Bay, Door County.

The Ice Age Trail is built and maintained largely by volunteers. Please join us in caring for this remarkable treasure.

Most of the blazed Ice Age Trail Segments fit hikers' ideas of a traditional, off-road hiking experience. Some segments, however, lead hikers right down the main streets of Wisconsin communities. This is by design – the Ice Age Trail is meant to connect people and communities.

The Trail occasionally coincides with state bike trails – biking is allowed on these sections only. Horseback riding is not permitted. Motorized vehicles are not permitted (with the exception of just a few segments that share state multi-use trails).

The Ice Age Trail began in the 1950s as the dream of Milwaukeean Ray Zillmer, who had a vision of a long, linear park winding through Wisconsin along the glacier's terminal moraine.

The Trail crosses over many ownership types, including private land, city parks, state parks, county forests and national forest.

The Trail travels through 31 counties.

One of the goals of the Ice Age Trail Alliance is to permanently protect the route of the Ice Age Trail. Every year, we purchase land with privately donated funds and grants from government partners to get closer to achieving this goal. The State of Wisconsin also acquires land for the Trail through its Knowles-Nelson Stewardship Program.

From www.ParksPlusHiking.com - Note that this tour is identical to our 5-day IAT tour with two added days of more remote and strenuous hiking near the town of Merrill.

9:00am Start of hike at host hotel Hampton Milwaukee Airport
Scuppernong Segment - Distance: 6 mi - Difficulty: 2

Hotel Holiday Inn Harborview – 1st of 2 nights
135 E Grand Ave, Port Washington, WI 53074 Tele: (262) 284-9461
www.ihg.com

Our exploration of the IAT begins in the Southern Unit of Wisconsin's Kettle Moraine State Forest on a series of rolling hills through mostly wooded terrain passing many trailside kettles. The segment winds among a network of ski trails, passes a public backpack shelter and group campground, and crosses a short section of private land. Following this warm-up hike, we head to Port Washington and our hotel on the shore of Lake Michigan.

Glacier Glossary: Kettle--A surface depression formed when large, detached, buried blocks of glacial ice melt, causing sand and gravel covering the ice to collapse into a crater-like hole.

Mon Oct 8 - Day 2 of hike

Parnell Segment - Distance: 13 mi - Difficulty: 4

Hotel Holiday Inn Harborview – 2nd of 2 nights

Our day's destination is the Northern Unit of the Kettle Moraine State Forest. Here we'll hike along a belt of forests, lakes, and wetlands surrounded on all sides by rolling farm fields. Highlights of the day include a traverse of world-famous Parnell Esker, which is four miles long and 5 - 30' in height, and the opportunity to climb 100' Parnell Observation Tower with its commanding view.

Glacier Glossary: Esker--A winding, rounded ridge composed of sand and gravel deposited by streams flowing through tunnels at the base of a glacier.

Tue Oct 9 - Day 3 of hike

Milwaukee River Segment - Distance: 8 mi - Difficulty: 3

Hotel AmericInn Lodge & Suites – 1st of 2 nights
3300 East Main, Merrill, Wisconsin 54452 Tele: (715) 536-7979
www.americinn.com

Today's hike continues through the northern Kettle Moraine, an area formed during the last Ice Age when two glacial lobes sideswiped each other then retreated leaving a rugged landscape of ridges, valleys, kettles, eskers, and kames. Following several wooded miles, the segment exits the State Forest and continues through farms fields, across several boardwalks, ending at the Sunburst Ski Hill. From the ski area, we'll commute northward to the small town of Merrill, our home for the next two evenings.

Glacier Glossary: Kame--A coned-shaped hill composed of water-rounded sand and cobblestones deposited by streams flowing downward through shafts in glacial ice.

Wed Oct 10 - Day 4 of hike

Wood Lake Segment - Distance: 13 mi - Difficulty: 4

Hotel AmericInn Lodge & Suites – 2nd of 2 nights

From Merrill, we head further north to the remote Wood Lake Segment of the IAT. Here we will travel through heavily wooded terrain that has recovered from extensive logging in the early 1900's. The rolling trail passes several IAT preserves, other public and private land, Wood Lake County Park, and ever-present glacial erratics. Highlighting the day is Wood Lake--67 acres of ice-blue water popular with picnickers, canoers, and swimmers (brr!)

Glacier Glossary: Erratic--A boulder carried long distances by a glacier, then deposited when the glacier melted. Erratics tend to be smooth and rounded and can be very large.

Thu Oct 11 - Day 5 of hike

Turtle Rock/Grandfather Falls Segments - Distance: 10 mi - Difficulty: 5

Hotel Cliffside Resort & Suites - 1st of 2 nights
351 Canyon Rd, Wisconsin Dells, WI 53965 Tele (608) 254-8521
www.cliffsideresort.com

Two hikes are planned for this day. West of the Wisconsin River and Grandfather Dam, we will hike a portion of the Turtle Rock Segment from a quiet logging road trailhead to the river's edge at the dam. Time permitting, we'll venture a bit further on an optional and very rocky/challenging trail to Grandfather Falls. Directly across the river, our second hike takes us above the fast-flowing river downstream of the dam with a short out-and-back spur into the Merrill School Forest. Following our hike, we'll head to our hotel in the Wisconsin Dells, this time overlooking scenic Lake Delton.

Glacier Glossary: Pothole--A smooth bowl carved into bedrock by the grinding action of stones whirling in a river eddy, often formed by torrents of glacial meltwater.

Fri Oct 12 - Day 6 of hike

Devil's Lake Segment - Distance: 11 mi - Difficulty: 5

Hotel Cliffside Resort & Suites – 2nd of 2 nights

Our sixth day on the IAT begins with a short commute from the Dells to our trailhead in Devil's Lake State Park. Highlights of the Devil's Lake segment include great views of the lake itself with its unique location between the 1.6 billion year-old east and west walls of Devil's Lake Gorge and two prominent glacial moraines "plugging" the lake to the north and south.

Glacier Glossary: Moraine--A ridge of widely varied length composed of sand, gravel, rocks, and boulders carried and deposited at the outer edge/front of the glacier.

Sat Oct 13 - Day 7 of hike

Gibraltar Rock Segment - Distance: 6 mi - Difficulty: 3

Our final day's hike begins on the southern shore of Lake Wisconsin, which we'll reach via the Merrimac Ferry. From the Wayside Park trailhead, we'll make our way up a 200' hill to stunning views of the Wisconsin River and nearby Baraboo Hills. After looping back to the Wayside, we'll make a short van commute, then conclude our IAT experience with a climb to Gibraltar Rock, a flat sandstone butte above a bucolic valley. Following our hike, we'll have a final lunch together, then head back to Milwaukee.

Glacier Glossary: Ice Sheet--A very large glacier such as has covered North America more than a dozen times from 2.5 million to 10,000 years ago. Much of the terminus (or southernmost extent) of the last North American Ice Sheet formed a weaving line across Wisconsin about a thousand miles long.

Ending about 4pm; evening flight is now tight since they moved it up to 5:05pm vs 7:15pm – traveling very light without checked baggage

Post Hotel Hampton Milwaukee Airport - NOT reserved

5:05pm Depart Milwaukee MKE via UA#4143

8:24pm Arrive Newark EWR

Note – 2 day turn around - depart to Seattle/Everett on Wednesday Oct 17 for Skate America

Participants:

Markus Borchert, owns a print business

Val Borchert, acct/admin out of Winnipeg

Chuck

Dan Feller

Bernie and Betsy

Janet

Steve cell: 303 957 6900

Nola cell: 303 249 8432

